

# Count Everyone, Include Everyone

Why Accessible and Representative Data  
Matters for the Disability Community

October 2021



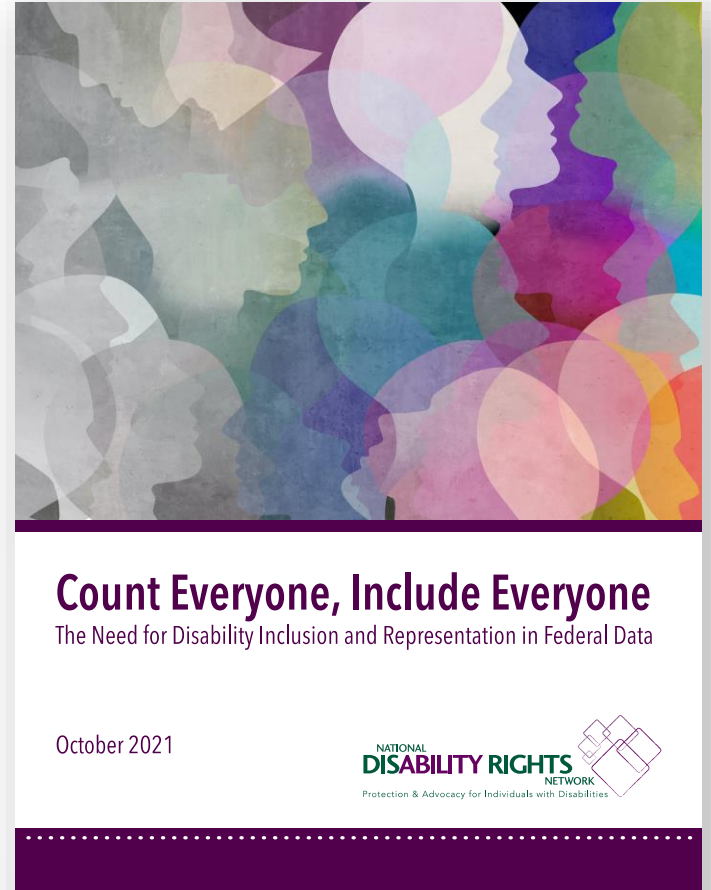
**Erika Hudson**  
Census Analyst



**Jennifer M. Koo**  
Census Research Assistant

# Presentation Overview

- 2020 Census Summary
- Importance of Federal Disability Data
- Navigating Disability Data
- Application & Recommendations
- Interactive Q&A Session
- Resources



**Which state lost a seat in the  
House of Representatives  
by 89 persons?**

# 2020 Census Summary

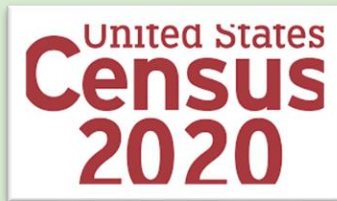
- 2020 Census Results
  - Apportionment ([April 2021](#))
  - Decennial Census Redistricting Data ([August 2021](#))
- What's Next?



**Why is federal disability data important?**

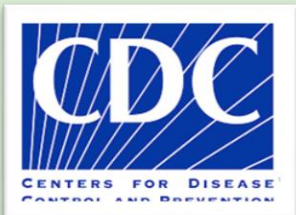
# U.S. Census Bureau

- In addition to the decennial census, the U.S. Census Bureau conducts additional surveys that provide useful information about the American population.
- The American Community Survey (ACS) and Survey of Income and Program Participation (SIPP) provide the most comprehensive federal disability data.



# Federal Agencies Spotlight

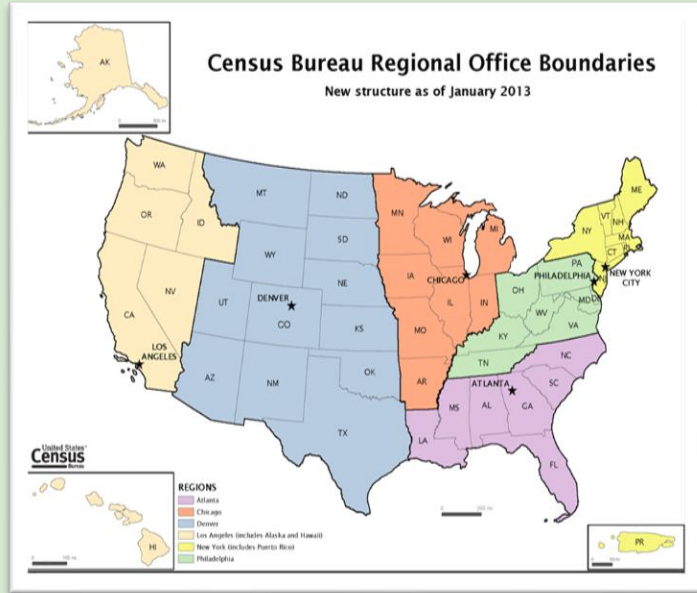
- Disability is a part of every community.
- All federal data is important.
- Our federal disability data report includes spotlights of various federal agencies that track disability data.





**Where can I find  
federal disability data,  
and how do I use it?**

# How to Navigate Data



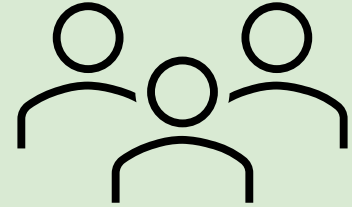
- The U.S. Census Bureau Regional Offices collect and disseminate data throughout the entire year.
- There are currently seven regional offices.
- For location-specific information about the 2020 Census, you can contact the (temporary) Regional Census Centers (RCCs).

# Considerations

- The scope and specifications of federal data varies among agency and department. It is important to identify your advocacy/research needs first to ensure you find the most useful information.
- Gaps in Federal Data
  - Different Definitions of Disability
  - Health Disparities, Racial Inequities, etc.
- Aggregated vs Disaggregated Data
- Bidirectional Engagement

**How does federal  
disability data apply to  
our work?**

## How can we use this data?

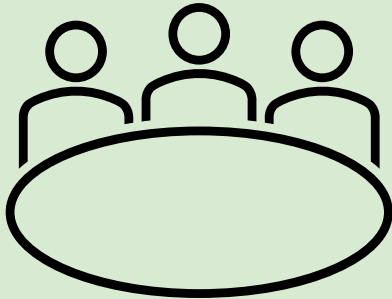


- **Population Changes**
  - “Nursing facilities/skilled-nursing facilities’ population increased 8.3% to 1,627,046.”
- **Federal Resources**
  - P&A, Education, Transportation, Nutrition, etc.
- **Representation and Redistricting**
  - Data Guided (Informed) or Data-Driven (decision-making)

# Recommendations

## Federal Agencies

- Enhanced Engagement
- Equitable Access



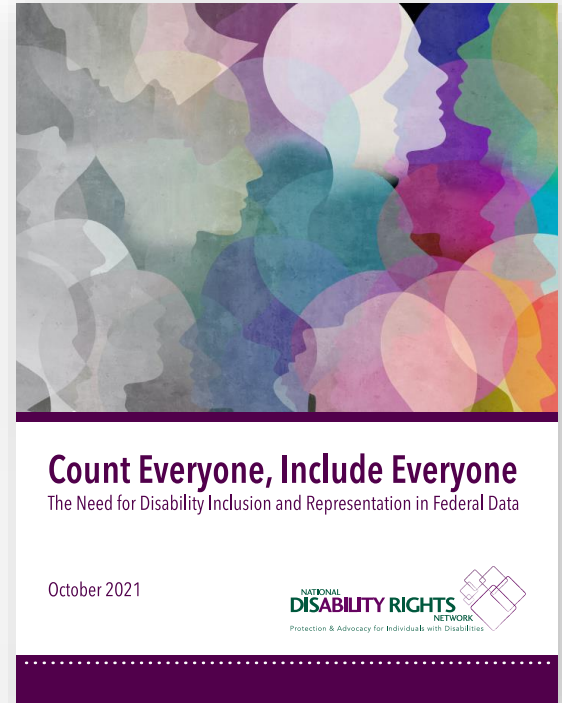
## Disability Community

- Community Conversations
- National Advisory Committee and Public Comment
- Participation and Accountability

# Q&A Session

# Resources

- NDRN Census Website:  
<https://www.ndrn.org/issues/census/>
- Contact your Regional Offices:  
<https://www.census.gov/about/regions.html>
- U.S. Census Bureau, Upcoming Data Releases:  
<https://www.census.gov/data/what-is-data-census-gov/upcoming-releases.html>





**Thank you!**